

Nagoya, Aichi

Aichi Prefecture has been Japan's most successful manufacturing hub for more than 40 years in terms of shipment value of manufactured goods. Automobile, aircraft, space, machine tools, and various other industries flourish in the prefecture, which is a vital manufacturing center in Japan.



Ceramics

Seto, in Aichi Prefecture, is the birthplace of *Seto-yaki* (literally, Seto ware). The root of the Japanese word *setomono* is a generic term for all pottery. Ceramics, with a 1000-year history, have been perfected over time and contributed to post-war industrial development as a sector unique to Nagoya City.

KYOTO

TOKYO

AICHI

Nagoya

OSAKA

0 100km



Automobile

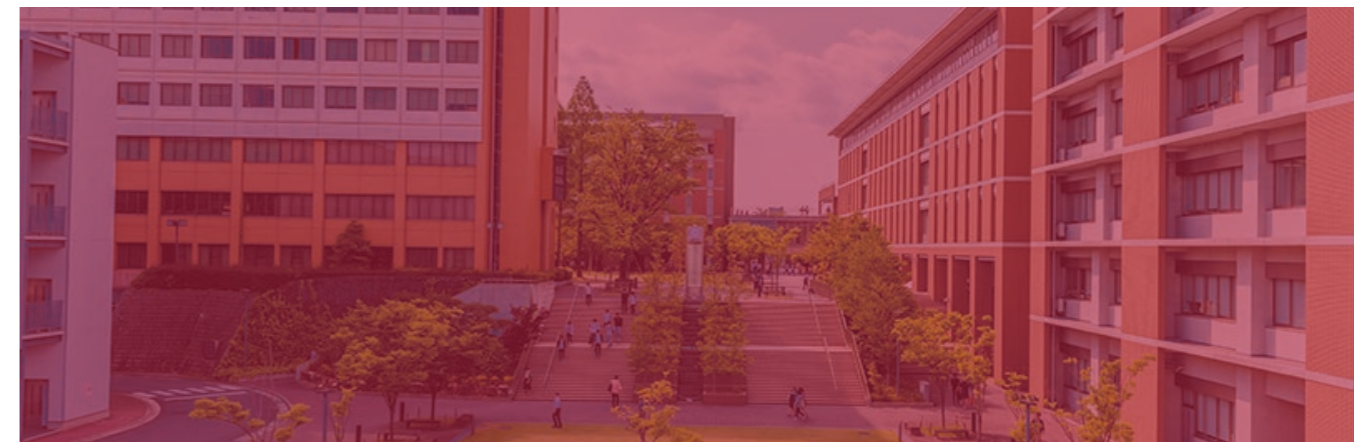
Aichi, in the heart of Japan, evolved by developing transportation systems connecting major cities in western and eastern Japan. The prefecture is the setting for a world-renowned automotive industry and many related plants that export automotive parts and relevant products, supporting the Japanese economy.



Brewing

The Japanese brewing culture that flowered in the Edo period remains active today in Chita Peninsula, Mikawa Region, and various other Aichi areas. These regions feature many sake brands and breweries using traditional methods and makers of vinegar, mirin cooking sake, tamari soy sauce, and miso.

MEIJO University



名城大学
MEIJO UNIVERSITY

1-501 Shiogamaguchi, Tempaku-ku, Nagoya, Aichi, Japan 468-8502

Tel: +81-52-838-2043 Email: mint@ccml.meijo-u.ac.jp



Tempaku
Campus



Yagoto
Campus



Nagoya Dome-Mae
Campus



www.meijo-u.ac.jp

名城大学

About

Meijo University
by the Numbers

魅力

Number 1 in Central Japan

Approximately

15,000+



Undergraduate and Graduate Students

Meijo University is one of the largest private universities in the Chubu region and offers integrated arts and sciences education.

Founded in

1926

Approximately

210,000+



Job Placement rate

Top-class in Japan

99.5%



2 Nobel Prize winners

Akira Yoshino
Isamu Akasaki

About Research



No.1 In Central Japan

7 consecutive years

University for which high school students want to apply

Partner universities around the world

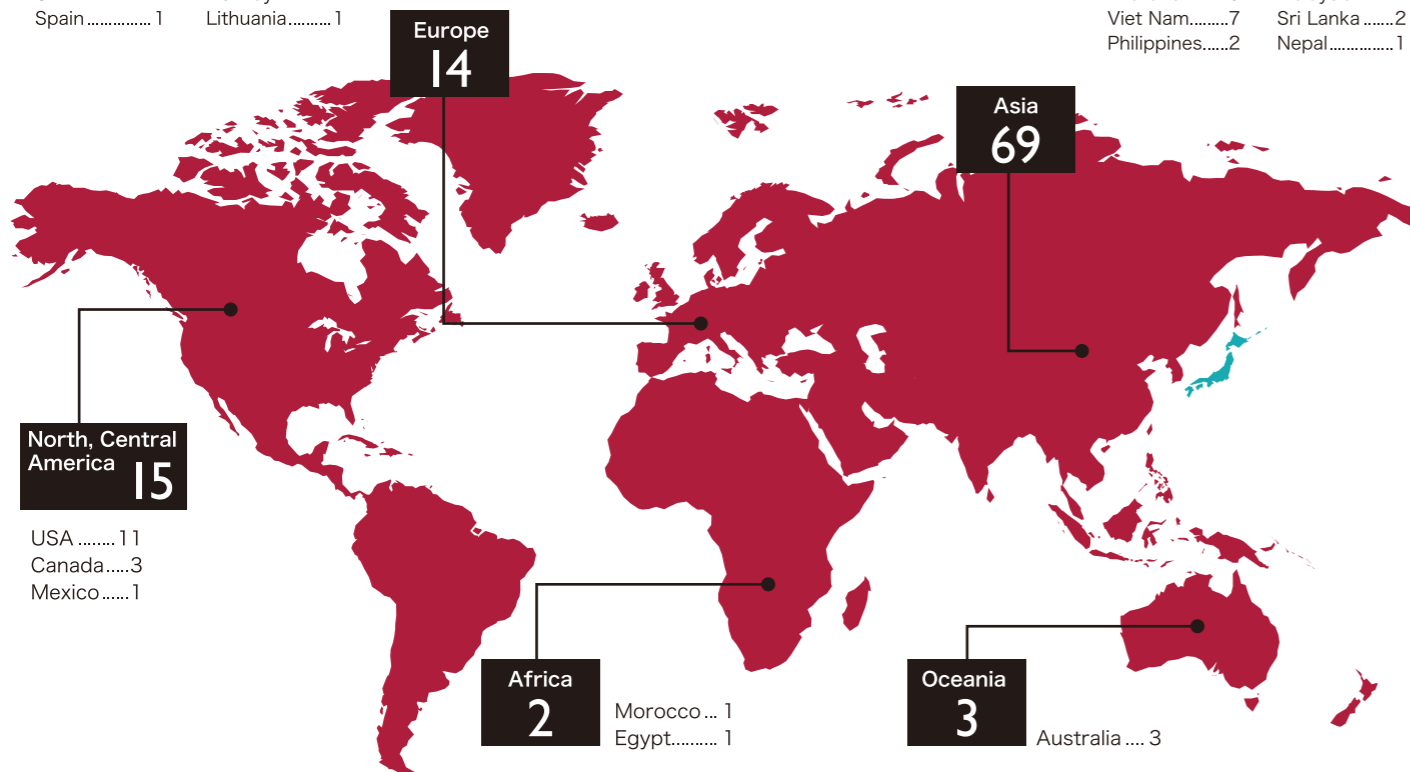
Approximately **100**

France 4
Russia 2
Italy 1
UK 1
Spain 1

Germany 1
Netherlands 1
Poland 1
Norway 1
Lithuania 1

China 25
Taiwan 10
Korea 6
Thailand 5
Viet Nam 7
Philippines 2

Myanmar 2
India 2
Indonesia 2
Malaysia 1
Sri Lanka 2
Nepal 1



USA 11
Canada 3
Mexico 1

Morocco... 1
Egypt..... 1

Australia ... 3

10 Undergraduate Faculties and **23** Departments

- Law
- Economics
- Human Studies
- Science and Technology

- Agriculture
- Business Management
- Foreign Studies

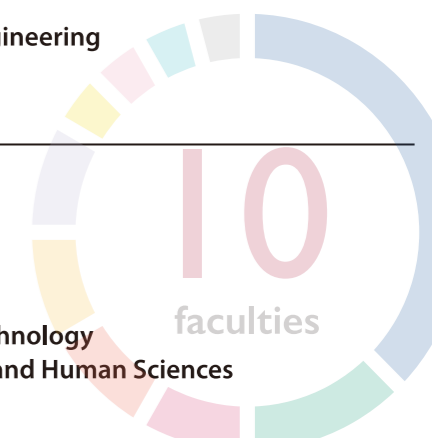
- Urban Science
- Information Engineering
- Pharmacy

10 Graduate Schools

- Law
- Human Studies
- Agriculture
- Information Engineering

- Business
- Urban Science
- Pharmacy

- Economics
- Science and Technology
- Environmental and Human Sciences

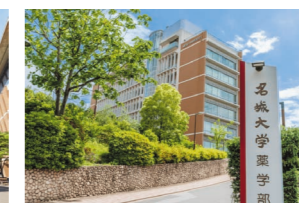


3 campuses

Our campuses are conveniently located near transportation stations. Nagoya features well-developed public transportation systems, including subways and buses, allowing you to reach the heart of the city in just 30 minutes from any of our campuses.



Tempaku Campus



Yagato Campus



Nagoya Dome mae Campus

Introduction of Faculties

Faculty of Law

Equipping professionals with the skills they need to make rational decisions based on their broad knowledge and logical thinking for society's sake in various areas.

- Department of Legal Science



Faculty of Foreign Studies

Cultivating "global communicators" to facilitate dialog and cooperation with the international community based on their English language competence, international understanding, and practical skills.

- Department of English and International Studies



Faculty of Science and Technology

Producing pioneering technologists who innovate a society that is based on our sophisticated educational curriculum backed by almost a century of history.

- Department of Mathematics
- Department of Electrical and Electronic Engineering
- Department of Materials Science and Engineering
- Department of Applied Chemistry
- Department of Mechanical Engineering
- Department of Vehicle and Mechanical Engineering
- Department of Mechatronics Engineering
- Department of Civil Engineering
- Department of Environmental Technology
- Department of Architecture
- Department of Materials Science and Applied Chemistry



Faculty of Information Engineering

A new faculty that opened its doors in April 2022. Offering two courses and four programs to develop next-generation information engineers.

- Department of Information Engineering



Faculty of Agriculture

Empowering students to gain expert knowledge and insights of life, food, environment, and nature to cultivate human resources capable of addressing challenges that humanity faces.

- Department of Agrobiological Resources
- Department of Applied Biological Chemistry
- Department of Environmental Bioscience



Faculty of Business Management

Giving students expert knowledge on organizational management and problem-solving for application in companies, local governments, and other types of organizations.

- Department of Business Management
- Department of International Business Management



Faculty of Human Studies

Providing the curricula for three fields, "psychology," "sociology and education," and "global studies and communication," to develop human resources who widely contribute to contemporary society.

- Department of Human Studies



Faculty of Economics

Furnishing students with a theoretical base for problem solving as it relates to economic issues inside and outside of Japan as well as the judgment criteria for rational decision-making.

- Department of Economics
- Department of Industrial and Social Economics



Faculty of Urban Science

Using sciences and humanities knowledge to explore the service sciences and provide solutions to urban problems, such as energy, environment, transportation, and disaster prevention.

- Department of Urban Science



Faculty of Pharmacy

Aiming to cultivate pharmacists and pharmaceutical researchers to address human health issues and explore better welfare through our advanced educational programs and research activities.

- Department of Pharmacy



Research



www.meijo-u.ac.jp/sp/meijoresearch/

Nobel Prize-winning Professors at Meijo University



Akira Yoshino

Inventor of lithium-ion battery

Born in Osaka Prefecture. Graduate of Kyoto University, Faculty of Engineering. Dr. Yoshino started his career at Asahi Chemical Industry Co., Ltd. (currently, Asahi Kasei Corporation) where he developed the prototype of a lithium-ion secondary battery in 1983 and established the basic concept of lithium-ion battery (LIB) in 1985. He has been a professor at the Graduate School of Science and Technology, Meijo University, since 2017. Dr. Yoshino won the Nobel Prize in Chemistry in 2019, after receiving the Chemical Technology Award, the C&C Prize, the IEEE Medal for Environmental and Safety Technologies, the Global Energy Prize, the Charles Stark Draper Prize, the Japan Prize, the European Inventor Award, and other prestigious awards.

society5.0

ゲノム編集

AI人工知能

研究力

Research Excellence at Meijo University

Development and Invention of New Nanomaterials

Meijo University is known as the birthplace of the carbon nanotube. Based on the tradition of our nanomaterials research, the global-level basic research for developing and inventing new nanomaterials is promoted on a university-wide scale by the research group headed by University Professor, Sumio Iijima. Research achievements are publicly announced in various ways. They are posted on websites and are the subject of mock lectures. By promoting our research mission, consistent as it is with our future vision, "Shaping a Community of Learning," we build the Meijo University brand and take it to the world.

Innovation of New Optical Devices

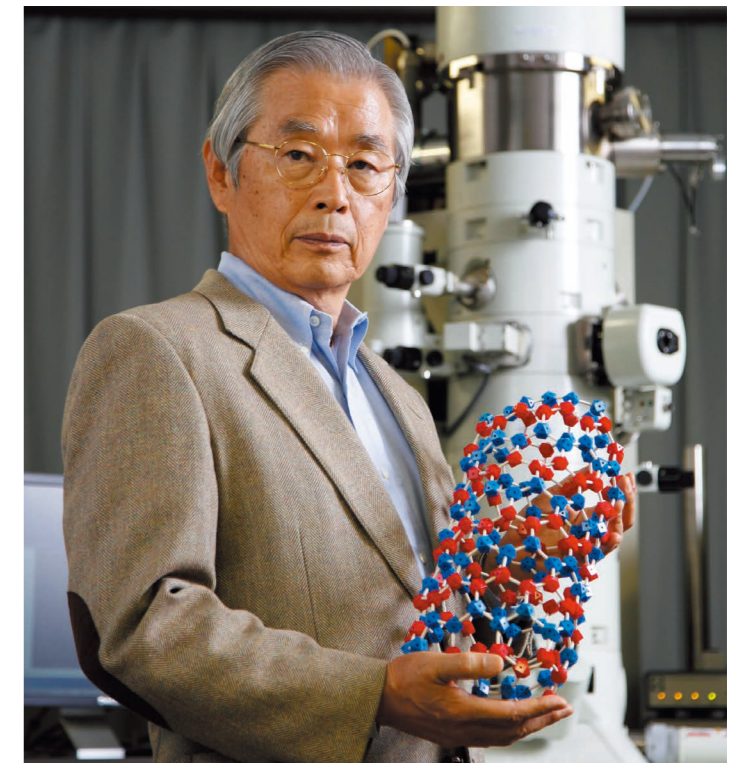
We aim to invent new blue LED-based optical devices to create a near-future world under the leadership of the late Distinguished Professor Isamu Akasaki, a Nobel Prize-winning scientist in Physics. We are also engaged in university-wide efforts to pioneer research of new and prestigious technology applications and projects to produce the next Nobel Prize winner.

These research achievements are made available to the public through websites, symposiums, mock experiments, and innovative programs designed by students. Doing so is expected to make people across the country aware of the brand image "Meijo University Strong in Research," which is recognized only in the Tokai region today.

Sumio Iijima

Pioneer of Nanoscience

Born in Saitama Prefecture. Graduate of the University of Electro-Communications. Ph.D. in Physics from Tohoku University. After working as a researcher at Arizona State University and as a visiting researcher at the University of Cambridge, Dr. Iijima joined NEC Corporation in 1991, where he developed carbon nanotube (CNT). He has been a professor at the Faculty of Science and Technology, Meijo University, since 1998. Dr. Iijima won the Benjamin Franklin Medal, the Balzan Prize, the Kavli Prize, the Prince of Asturias Award, the Order of Culture, the European Inventor Award, and other prestigious awards. Member of the Japan Academy and the National Academy of Sciences, USA.



Isamu Akasaki, 1929 - 2021

Inventor of efficient blue light-emitting diode (LED)

Born in Kagoshima Prefecture. Graduate of Kyoto University, Faculty of Science. After working for Kobe Industries Corp. (currently, Fujitsu Limited) and teaching as an assistant professor at Nagoya University, the late Dr. Akasaki was Head of Basic Research Laboratory 4 at the Matsushita Research Institute Tokyo, Inc. (MRIT) He has served as a professor at the Faculty of Science and Technology, Meijo University since 1992. He developed the basic

technology of blue light-emitting diode and invented the world-first blue LED in 1989. He won the Nobel Prize in Physics in 2014, after receiving the C&C Prize, the Toray Science and Technology Prize, the Asahi Prize, the Fujihara Award, the John Bardeen Award, the Kyoto Prize, and other prestigious awards.

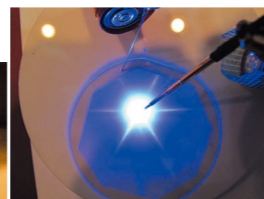
5G

人生
100年

車の世界

SDGs

VR最前線



Action

実行力

Social Collaboration

1 Opening of a picture book salon

“Hitotsuyama Sho: picture book salon 105” in public housing



To enhance and promote the appeal of public housing, a picture book salon—Hitotsuyama Sho: picture book salon 105—was launched through a collaboration between a laboratory in the Department of Architecture, Faculty of Science and Technology, and a local government. The salon supports families with children living in public housing complexes and the surrounding community. Students from the university renovated one of the existing housing units and now operate the salon themselves. By living temporarily in a housing complex and actively engaging with local residents, the students were able to analyze the challenges and appeal of life in public housing. They shared their findings and insights with a broader audience, highlighting the potential of such complexes as community hubs.



2 Collaboration with the AT Group to develop original coffee for stores

To create a unique customer experience at retail locations, the AT Group—a company centered around Toyota dealerships—collaborated with a seminar class from the Faculty of Business Management to develop an original blended coffee and a custom-designed paper cup featuring the silhouette of Aichi Prefecture. The coffee and cups produced through this collaboration were used in actual stores, bringing the joint effort between students and the company to life at the customer level.



3 Visualization Project for the Community Garbage Truck Route



In collaboration with local governments in Aichi Prefecture, an experimental project was launched to optimize the timing of household waste disposal. By equipping garbage collection trucks with GPS devices, the project enabled residents to track vehicles in real time using their smartphones. This initiative was designed with three main goals: (1) to improve convenience for citizens when disposing of waste; (2) to support the management of waste collection points and help preserve the surrounding environment; and (3) to increase efficiency in responding to residents' inquiries by reducing response time.

4 Professional Sports Business Study Group



Study group activities kicked off in July to explore the ideal factors in professional sports businesses in a new normal with COVID-19 and a post-COVID-19 society. It is our new formal extracurricular activity. It provides an open opportunity for everyone to learn regardless of their faculties and grades. With the theme of an ideal professional sports business both in a post-COVID-19 society and a new normal with COVID-19, where people are required to shift to a new lifestyle, we will conduct study group activities (to be held online in the first semester) engaged in four areas. In the second semester, we will launch a project based on student ideas.

Vision

Tracing its roots to the Nagoya Science and Technology Course founded in 1926, Meijo University is one of the best educational institutions in the Chubu region, having produced more than 200,000 graduates and alumni, and is proud of its long history and tradition.

We provide educational and research opportunities that emphasize practical learning consistent with the spirit of our establishment: “Developing moderate, impartial, and practical human resources worthy of national and social trust.”

Because of these efforts, many corporations recognize our graduates as having excellent practical skills and persistence to cope with various challenges.

Today, as society faces rapid changes with economic globalization, an aging population with a declining birth rate, the advent of robots and artificial intelligence (AI) and changes in industrial and employment structures, we are increasingly driven to change our lifestyles and ways of working. Simply put, we live in an era wherein forecasting the future has become a challenge even as our conventional wisdom becomes increasingly obsolete.



Now more than ever, it is imperative for educational institutions to cultivate practical individuals capable of taking decisive actions who can apply their foresight, diversity, and expertise to challenging situations and take decisive actions.

Our university has celebrated the 100th anniversary in 2026. To foster human resources to tackle such challenges, we renewed our vision to “From the Chubu Region to the World - Meijo University as a Center for *Sozogata Jitsugaku* (創造型実学)”: *Sozogata Jitsugaku*, literally meaning “creative and practical learning,” represents Meijo University’s distinctive academic philosophy. It cultivates the ability to lead problem-solving, contributing to innovation, and bring ideas to fruition.

Continuing our history and traditions since our establishment, Meijo University and Meijo University Senior High School will further evolve and develop people who can meet social expectations in the oncoming era.

We ask for your continued understanding and support.

Chairperson, Board of Trustees
AKIHIRO OHARA

As an educational institution, our mission is to advance excellence in research that drives innovation, contribute to solving societal challenges and creating new value, and, grounded in these achievements, deliver high-quality education aimed at nurturing future leaders.

Contemporary society faces a range of complex challenges, including declining birthrates, an aging population, global warming, resource depletion, and conflicts between nations and ethnic groups. Many of these issues stem from shifting values and economic development models that prioritize scale and efficiency. As we continue to pursue prosperity, it is essential to adopt creative approaches that transcend conventional frameworks to effectively address these pressing concerns. In this context, universities are expected to provide educational opportunities that foster individuals capable of collaborating across diverse backgrounds while drawing on interdisciplinary knowledge that goes beyond the boundaries of specialized fields.

In 2026, Meijo University will commemorate the 100th anniversary of its founding, marking a century since Professor Juichi Tanaka established the Nagoya Higher Institute of Science and Technology. Having overcome numerous challenges and built a proud legacy over the decades, Meijo University now looks ahead with a renewed vision for the next century: “From the Chubu Region to the World — Meijo University as a Center for *Sozogata Jitsugaku* (創造型実学).”

The Chubu region, particularly Aichi Prefecture, where our university is located, is one of Japan’s foremost centers of manufacturing and industrial innovation. Given our long-standing emphasis on practical learning and proactive industry-academia collaboration, Meijo University’s deep roots in this region carry significant meaning. The phrase “From the Chubu Region to the World” reflects our commitment to delivering globally competitive education and nurturing individuals with the potential to become global leaders.

Sozogata Jitsugaku (創造型実学), literally meaning “creative and practical learning,” represents Meijo University’s distinctive academic philosophy. It cultivates the ability to lead problem-solving, contribute to innovation, and bring ideas to fruition. Through continuous educational offerings grounded in this philosophy, Meijo University remains steadfast in its commitment to the future. United in purpose, our faculty and staff will continue to work toward becoming a comprehensive university that responds effectively to the evolving needs of society.

We ask for your continued understanding and support of the university’s educational and research initiatives.

President
MITSUNORI NOGUCHI

Message

